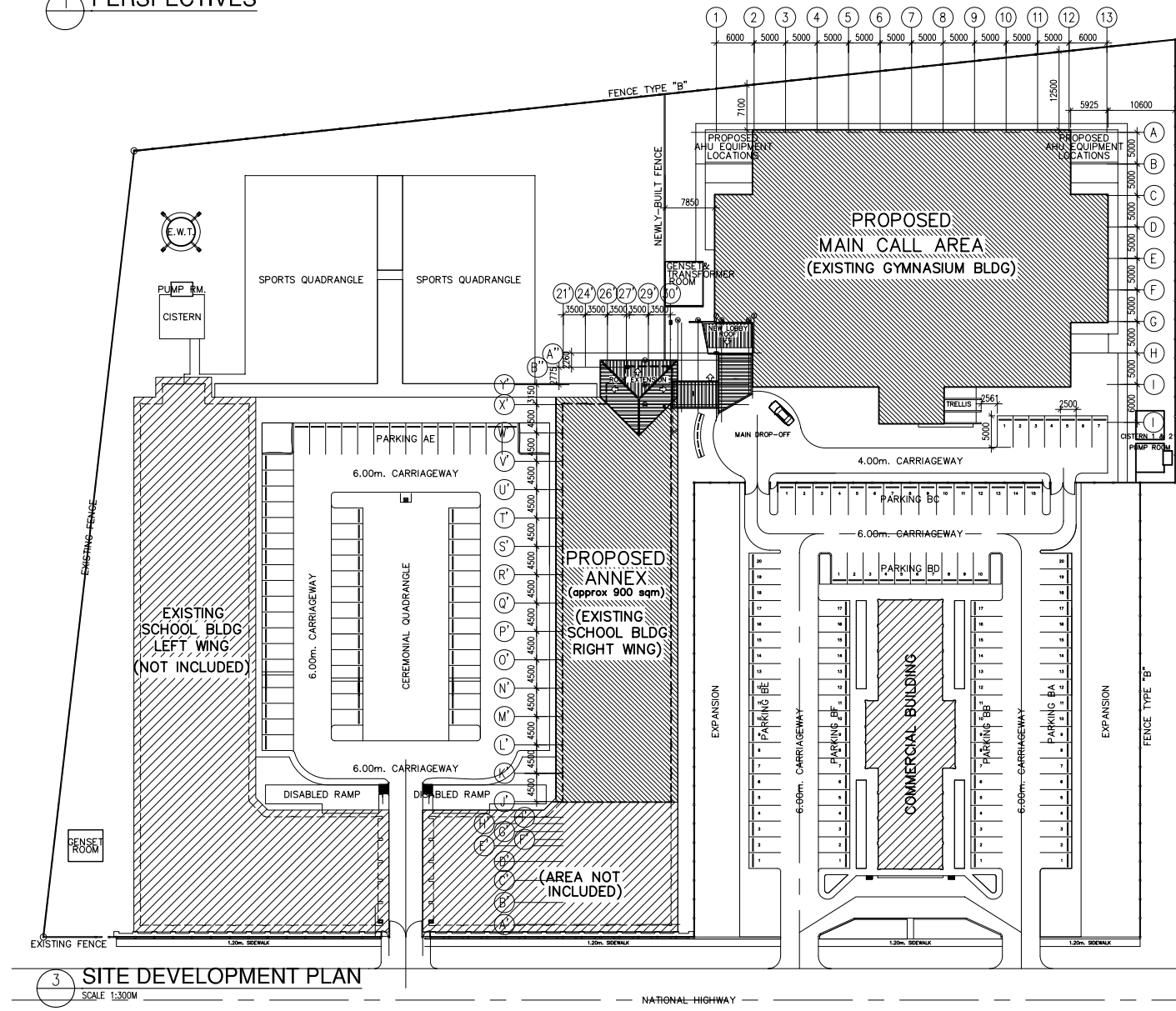
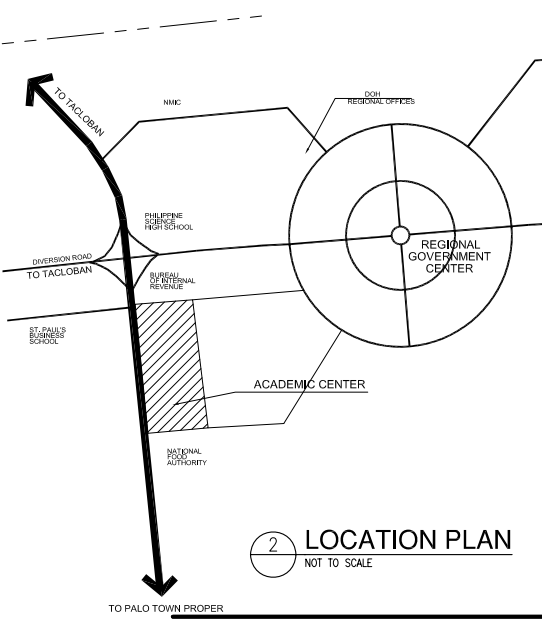




1 PERSPECTIVES



3 SITE DEVELOPMENT PLAN
SCALE 1:300M

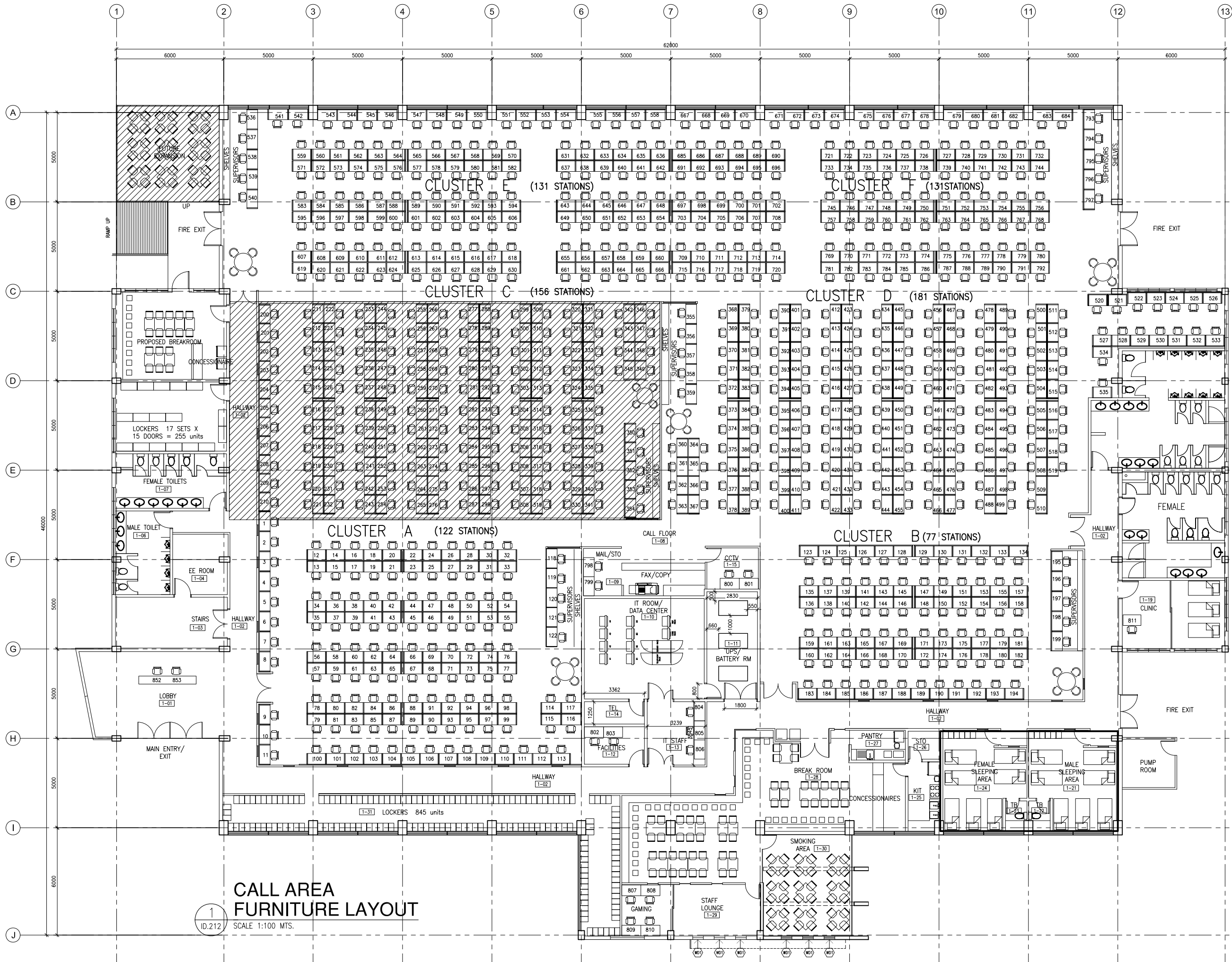


2 LOCATION PLAN
NOT TO SCALE

TABLE OF CONTENTS	
GENERAL	
G.001	SITE DEVELOPMENT PLAN LOCATION MAP, PERSPECTIVES
INTERIOR	
ID.211	CALL AREA PARTITIONS AND SETTING-OUT PLAN
ID.212	CALL AREA FURNITURE LAYOUT
ID.213	CALL AREA REFLECTED CEILING PLAN
ID.221	MEZZANINE PARTITIONS AND SETTING-OUT PLAN FURNITURE LAYOUT REFLECTED CEILING PLAN
ID.231	ANNEX FURNITURE LAYOUT
ID.232	ANNEX PARTITIONS AND SETTING-OUT PLAN
ID.233	ANNEX REFLECTED CEILING PLAN
ID.311	CALL AREA SECTIONS
ID.331	ANNEX SECTIONS
ELECTRICAL	
01EP.101	ANNEX GROUND & SECOND FLR. POWER AND ACCU LAYOUT
01EL.101	ANNEX GROUND & SECOND FLR. LIGHTING LAYOUT
01EY.101	ANNEX GROUND & SECOND FLR. FDAS & CCTV LAYOUT
02EP.101	CALL AREA POWER & ACCU LAYOUT
02EL.101	CALL AREA PHASE 1 LIGHTING LAYOUT
02EY.101	CALL AREA PHASE 1 FDAS & CCTV LAYOUT
03EP.101	MEZZANINE POWER & ACCU LAYOUT
03EL.101	MEZZANINE LIGHTING LAYOUT
03EY.101	MEZZANINE FDAS LAYOUT
04EP.101	CALL AREA & POWER HOUSE POWER & LIGHTING LAYOUT EXTERIOR LIGHTING LAYOUT
EP.601	LEGEND SINGLE LINE DIAGRAM
EP.602	LOAD SCHEDULE
STRUCTURED CABLEING / IT	
	CALL AREA OUTLET ALLOCATION
	CALL AREA CONDUIT ALLOCATION
	ANNEX OUTLET ALLOCATION
	ANNEX CONDUIT ALLOCATION
	DETAILS
	DETAILS
	DETAILS
MECHANICAL	
ME.01	CALL AREA AC & DUCTWORK EQUIPMENT LAYOUT
ME.02	MEZZANINE & ANNEX AC & DUCTWORK EQUIP. LAYOUT
ME.03	CALL AREA FIRE PROTECTION LAYOUT
ME.04	MEZZANINE & ANNEX FIRE PROTECTION LAYOUT
SANITARY	
PL.101	GENERAL NOTES & DETAILS
PL.102	CALL AREA PLUMBING LAYOUT
PL.103	CALL AREA PLUMBING LAYOUT
PL.201	ANNEX PLUMBING LAYOUT

REPUBLIC OF THE PHILIPPINES PHILIPPINE ECONOMIC ZONE AUTHORITY OFFICE OF THE BUILDING OFFICIAL	
CITY / PROVINCE	
LAND USE AND ZONING	
LINES AND GRADES	
ARCHITECTURAL	
STRUCTURAL	
SANITARY	
ELECTRICAL	
MECHANICAL	

EASTRENCON BUILDERS PROJECT MANAGERS		
16 ST. THERESE ST., PROVIDENT VILLAGE, MARKINA CITY TEL / FAX +63-2-8214234 EMAIL eastrencon@yahoo.com		
PROJECT		
APAC Customer Services, Inc. OFFICE INTERIOR FIT OUT		
LOCATION GYMNASIUM & 2ND FLOOR SCHOOL BUILDING RIGHT WING, LEYTE ICOT PARK, LEYTE ACADEMIC CENTER, PAWING, PALO, LEYTE PROVINCE		
OWNER / DEVELOPER		
APAC CUSTOMER SERVICES, INC. PHILIPPINE BRANCH		
ARCHITECT		
MONIQUE M. GABRIEL		
PRC NO.	16663	
PTR NO.	8786675M	
DATE ISSUED	15 JANUARY 2008	
PLACE ISSUED	PARANAQUE CITY	
REPRODUCTION OF THESE DOCUMENTS, FOR PURPOSES NOT RELATED TO THIS PROJECT SHALL NOT BE PERMITTED WITHOUT ANY WRITTEN CONSENT FROM THE ENGINEER/ARCHITECT. RA 545		
TYPE OF DOCUMENT		
AS-BUILT DRAWINGS		
NO.	REVISIONS	DATE
SCALE	A1 1:300M	NORTH
	A3 1:600M	
DATE	25 FEBRUARY 2009	
SHEET TITLE		
SITE DEVELOPMENT PLAN		
DRAWING NO.		
G.001		



CALL AREA FURNITURE LAYOUT
 SCALE 1:100 MTS.

1
ID.212

EASTRENCON
BUILDERS PROJECT MANAGERS

16 ST. THERESE ST.,
PROVIDENT VILLAGE,
MARKINA CITY
TEL / FAX +63-2-8214234
EMAIL eastrencon@yahoo.com

APAC
Customer
Services, Inc.
OFFICE INTERIOR
FIT OUT

LOCATION
GYMNASIUM &
2ND FLOOR SCHOOL
BUILDING RIGHT WING,
LEYTE ICOT PARK,
LEYTE ACADEMIC CENTER,
PAWING, PALO, LEYTE PROVINCE

OWNER / DEVELOPER
APAC CUSTOMER SERVICES, INC.
PHILIPPINE BRANCH

ARCHITECT
MONIQUE M. GABRIEL

PRC NO. 16663
PTR NO. 8786675M
DATE ISSUED 19 JANUARY 2009
PLACE ISSUED PARANAQUE CITY
REPRODUCTION OF THESE DOCUMENTS, FOR PURPOSES NOT RELATED TO THIS PROJECT SHALL NOT BE PERMITTED WITHOUT ANY WRITTEN CONSENT FROM THE ENGINEER/ARCHITECT. RA 545

TYPE OF DOCUMENT
FOR CONSTRUCTION

NO.	REVISIONS	DATE

SCALE	A1	1:100M
	A3	1:200M

DATE
OCTOBER 2009

SHEET TITLE
CALL AREA FURNITURE LAYOUT

DRAWING NO.
ID.212